

TAVENTO

ENJOY SPORTS



FITNESS
2023 EDITION



ABOUT **AVENTO**

Sport is part of everyday life. At Avento we believe that everyone should be able to participate in whatever capacity suits them best. That's what has driven us to develop and produce up-to-date, affordable sports gear for the last 6 decades. We do this based on the following blueprint:

ALL SPORTS AND ALL SORTS

Avento's main goal is to make sport accessible to as many people as possible. That's why we keep our collection so extensive. Whether you're looking to train skills, prepare for competition, build strength, increase endurance or to improve your body shape, you can be sure that Avento has the answer for all your sporting needs.

VALUE FOR MONEY

Keeping our products affordable while maintaining decent product quality goes hand in hand with our focus on accessibility. We go to great lengths to develop and produce attractive quality sports and leisure gear at a fair price point.

EVERYWHERE, EVERY DAY

All Avento products are designed for optimal functionality and comfort but durability and practicality are also key in our design process. Our gear should be able to withstand daily use, have a long lifespan and have a high 'grab-it-and-go' factor. If our products are user-friendly, compact, lightweight, portable and/or collapsible, it means you can use and store them almost anywhere, making regular exercise more easily achievable.

NO-NONSENSE AND STILL FUN

We like to keep things simple. Avento is all about providing basic versions of a range of sportswear and equipment to the everyday sports enthusiast. However, sport is also synonymous with fun and recreation. Enjoying movement, together time and healthy competition is just as important as improving performance and fitness levels. Look good, feel great and have fun doing it!

TODAY'S TRENDS, TOMORROW'S ESSENTIALS

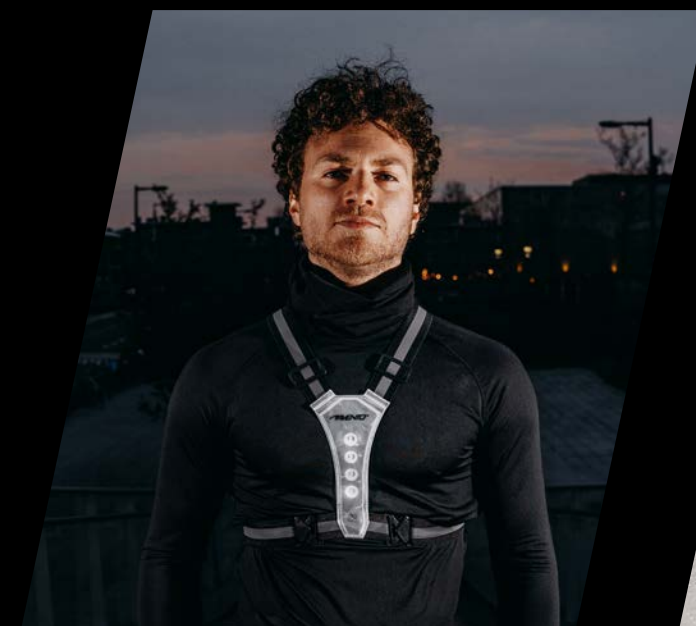
Since our founding in the 60's – when sport as leisure and personal fitness became popular - we have responded to most every market trend in the sports sector. Understanding the needs of both individual enthusiasts and emerging sports are instrumental in the development of our product portfolio, as are material science and contemporary production processes. What we learn today (from you) shapes what we will produce tomorrow. Keep on inspiring us!

ONE CLEAR CHOICE

At Avento, we aim to keep our product range as comprehensive as possible and to offer consistency in style and product quality. You can always find what you need at a fair price via a single trusted source. Plus, if you always choose for Avento, then you can enjoy the added benefit of your gear always matching! Year after year of fuss-free shopping for everyone!

DISCOVER MORE OF OUR SPORT RANGES!

CHECK OUT www.aventosports.com



ACTIVE GEAR

SPORTS ATTIRE
RUNNING
VISIBILITY
ACCESSORIES



BALLSPORTS

FOOTBALL
BASKETBALL
VOLLEYBALL
AMERICAN SPORTS



BOXING

GLOVES
STANDARDS
BAGS
ACCESSORIES



RACKET SPORTS

BADMINTON
TABLE TENNIS
TENNIS
PADEL

SMART PACKAGING

High-end technical specifications, carefully chosen modern materials and parts and first-rate design combine to guarantee our users excellence in comfort, functionality, safety and affordability.

All newly-developed products carry the most up-to-date, fresh and trendy Avento colour scheme creating a uniform and attractive collection of winning products. Perhaps even more importantly – as it is key, being the main first impression of our products and brand - our packaging not only benefits from the same detailed consideration as our products but extra care is taken to make packaging especially attractive, orderly and properly informative.

- packaging includes more cardboard and less single-use plastic than ever, while remaining robust, durable and attractive in in-store displays
- product categories are often evident in the appearance of the products themselves, but always on their packaging by way of colour usage, making in-store displays easy to organise and clearly readable for consumers (see photo right – all fitness items have matching packaging with the same petrol-coloured band)
- relevant exercises are visualised on the packaging
- product information on-product, on packaging and in manuals is uniform, succinct and brand-consolidated
- all product titles, important warnings and any manuals that accompany the products are available in 23 languages



FITNESS

MATS - WEIGHTS - FUNCTIONAL - YOGA - ACCESSORIES

Whether you're looking to (re)train skills, to prepare for competition, to build strength, to increase endurance or to improve your body shape, you can be sure that Avento is the answer for all your fitness essentials. Strong, safe, durable, contemporary products for all fitness levels. From high intensity workouts to mindful yoga sessions, there is an Avento product for everyone.



ON THE MAT

AVENTO

42MC

FITNESS MAT PRINT NEOPRENE

- quality: neoprene/rubber
- comfortable neoprene fitness mat
- smooth top
- rubber non-slip bottom surface
- thickness approx. 0.6 cm
- dimensions approx. 180 x 60 cm
- with handy carrying strap

*Per item in shrink foil
6 items per colour in an export carton*



42MD

● FITNESS/YOGA MAT NBR

- quality: high-quality NBR foam
- comfortable fitness mat
- very shock-absorbent
- smooth top
- non-slip top and bottom surface
- thickness approx. 1.2 cm
- dimensions approx. 183 x 61 cm

Per item in shrink foil

6 items per colour in an export carton



42MA



○ EXERCISE MAT MULTIFUNCTIONAL XPE

- quality: 100% XPE
- basic mat
- easy to clean
- thickness approx. 0.7 cm
- dimensions approx. 160 x 60 cm

Per item in shrink foil

18 items per colour in an export carton

42MB



○ FITNESS/YOGA MAT BASIC

- quality: synthetic
- compact grid texture
- basic mat
- easy to clean
- thickness approx. 0.4 cm
- dimensions approx. 173 x 61 cm
- with handy carrying strap

Per item in shrink foil

12 items per colour in an export carton

42MF



NEW

● FITNESS/YOGA MAT

- quality: soft, eco-friendly TPE
- 2-tone fitness mat
- double-sided non-slip texture
- easy to clean
- thickness approx. 0.6 cm
- dimensions approx. 183 x 61 cm
- lightweight: 700 gram
- including handy extra wide carrying strap

Per item in shrink foil

6 items per colour in an export carton

WEIGHTS

42DF

DUMBBELL ADJUSTABLE SYNTHETIC 15 KG

- quality: synthetic/chromed steel
- synthetic discs filled with a mixture of sand/cement
- chrome-plated steel handlebar with synthetic non-slip grip
- the weight is easy to adjust by adding or removing discs
- total weight approx. 15 kg

Per set in a showbox

Per set in an export carton



42DC

○ HAND WEIGHT SET
BONE - 2 X 3 KG

- quality: steel/vinyl
- steel weights completely covered with vinyl layer (matt)
- anatomically-shaped

*Per set in a showbox
2 sets in an export carton*

42DB

○ HAND WEIGHT SET
BONE - 2 X 2 KG

- quality: steel/vinyl
- steel weights completely covered with vinyl layer (matt)
- anatomically-shaped

*Per set in a showbox
2 sets in an export carton*



42DA

○ HAND WEIGHT SET
BONE - 2 X 1 KG

- quality: steel/vinyl
- steel weights completely covered with vinyl layer (matt)
- anatomically-shaped

*Per set in a showbox
4 sets in an export carton*



42DH

○ 3 PAIRS OF HAND WEIGHTS + RACK

- quality: synthetic/steel/vinyl
- synthetic rack with 3 pairs of hand weights - 2 x 1 kg, 2 x 2 kg and 2 x 3 kg
- anatomically-shaped steel weights completely covered with vinyl layer (matt)
- total weight 12 kg

*Per set in a showbox
1 sets in an export carton
64 sets on a pallet*



42AD

○ WRIST/ANKLE WEIGHT NEOPRENE
2 X 0.5 KG

- quality: neoprene sand/iron filling
- circumference 16-32 cm
- velcro fastener

*Per set in a showbox
6 sets in an export carton*

42AE

○ WRIST/ANKLE WEIGHT NEOPRENE
2 X 1.0 KG

- quality: neoprene sand/iron filling
- circumference 16-32 cm
- velcro fastener

*Per set in a showbox
6 sets in an export carton*



42KB



○ KETTLEBELL
6 KG

- quality: synthetic
- plastic kettlebell with cement filling
- round ball with flat bottom and broad handle

Per item in a wrapper
Per item in an export carton

42KD



○ KETTLEBELL
10 KG

- quality: synthetic
- plastic kettlebell with cement filling
- round ball with flat underside and broad handle

Per item in a wrapper
Per item in an export carton

42KE



○ KETTLEBELL
12 KG

- quality: synthetic
- plastic kettlebell with cement filling
- round ball with flat bottom and broad handle

Per item in a wrapper
Per item in an export carton

42KF



○ KETTLEBELL
16 KG

- quality: synthetic
- plastic kettlebell with cement filling
- round ball with flat bottom and broad handle

Per item in a wrapper
Per item in an export carton

42KC

○ KETTLEBELL
8 KG

- quality: synthetic
- plastic kettlebell with cement filling
- round ball with flat bottom and broad handle

Per item in a wrapper
Per item in an export carton

42KA

○ KETTLEBELL
4 KG

- quality: synthetic
- plastic kettlebell with cement filling
- round ball with flat bottom and broad handle

Per item in a wrapper
Per item in an export carton



42KJ **NEW**

● KETTLEBELL
12 KG

- quality: full cast iron kettlebell
- round ball with flat bottom and wide ergonomic handle
- easy to clean and store
- coloured ring and embedded weight indication
- weight approx. 12 kg

Per item in a wrapper

Per item in an export carton



NEW

42KG



○ KETTLEBELL CAST IRON
6 KG

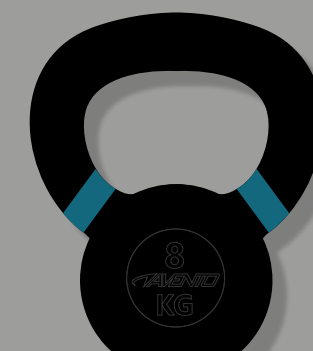
- quality: full cast iron kettlebell
- round ball with flat bottom and wide ergonomic handle
- easy to clean and store
- coloured ring and embedded weight indication
- weight approx. 6 kg

Per item in a wrapper

Per item in an export carton

NEW

42KH



○ KETTLEBELL CAST IRON
8 KG

- quality: full cast iron kettlebell
- round ball with flat bottom and wide ergonomic handle
- easy to clean and store
- coloured ring and embedded weight indication
- weight approx. 8 kg

Per item in a wrapper

Per item in an export carton

NEW

42KI



○ KETTLEBELL CAST IRON
10 KG

- quality: full cast iron kettlebell
- round ball with flat bottom and wide ergonomic handle
- easy to clean and store
- coloured ring and embedded weight indication
- weight approx. 10 kg

Per item in a wrapper

Per item in an export carton



42DE

○ DUMBBELL ADJUSTABLE STEEL
15 KG

- quality: steel
- black steel discs
- handlebar and star collars made of chrome-plated steel with non-slip grip texture
- the weight is easy to adjust by adding or removing discs
- total weight approx. 15 kg
- handlebar length 35 cm

*Per set in a showbox
1 item in an export carton*



42DP

○ DUMBBELL
10 KG

- quality: steel discs with matt TPR shell
- steel handle with grip texture
- weight approx. 10 kg
- width grip 14 cm

*Per item in a wrapper
1 item in an export carton*



42DM

○ BARBELL SET ADJUSTABLE
20 KG

- quality: steel/synthetic
- steel sectional handlebar 130 cm
- synthetic discs with sand/cement filling
- the weight is easy to adjust by adding or removing discs
- total weight approx. 20 kg

*Per set in a showbox
1 item in an export carton*

NEW



42DO NEW

○ DUMBBELL
7.5 KG

- quality: steel discs with matt TPR shell
- steel handle with grip texture
- weight approx. 7.5 kg
- width grip 14 cm

*Per item in a wrapper
1 item in an export carton*



42DN NEW

○ DUMBBELL
5 KG

- quality: steel discs with matt TPR shell
- steel handle with grip texture
- weight approx. 5 kg
- width grip 14 cm

*Per item in a wrapper
1 item in an export carton*

FUNCTIONAL EQUIPMENT

AVENTO

420B

● FITNESS/GYM BALL
● Ø 65 CM

- quality: synthetic
- anti-burst
- antistatic
- diameter approx. 65 cm
- suitable for a user with a body length of approx. 165 up to 185 cm and a body weight up to 100 kg
- made from dermatologically-friendly material

*Per item in a showbox
12 items per colour in an export carton*

420F

● HAND PUMP FOR FITNESS/
GYM BALL DOUBLE ACTION

- quality: PE
- continuous air supply with up and downwards movement
- length 23 - 34 cm
- diameter 5 cm

*Per item on a header card
50 items in an export carton*



ON THE BALL



42OK

- SOFT EXERCISE BALL
Ø 23 CM
- quality: synthetic
- anti-burst
- antistatic
- light and easy to handle
- helps to improve strength, endurance, concentration and coordination
- non-slip and tactile surface of the ball provides the necessary grip
- diameter approx. 23 cm

Per item in a showbox
12 items in an export carton

42OJ

- SOFT EXERCISE BALL
Ø 18 CM
- quality: synthetic
- anti-burst
- antistatic
- light and easy to handle
- helps to improve strength, endurance, concentration and coordination
- non-slip and tactile surface of the ball provides the necessary grip
- diameter approx. 18 cm

Per item in a showbox
12 items in an export carton

42OD

- FITNESS/GYM BALL + PUMP
Ø 65 CM
- quality: synthetic
- anti-burst
- antistatic
- diameter ball approx. 65 cm
- suitable for a user with a body length of approx. 165 up to 185 cm and a body weight up to 100 kg
- made from dermatologically-friendly material
- including PE hand-pump (42OF)

Per item in a showbox
12 items per colour in an export carton

42OA

- FITNESS/GYM BALL
Ø 55 CM
- quality: synthetic
- anti-burst
- antistatic
- diameter approx. 55 cm
- suitable for a user with a body length of approx. 140 up to 165 cm and a body weight up to 100 kg
- made from dermatologically-friendly material

Per item in a showbox
12 items per colour in an export carton

42OC

- FITNESS/GYM BALL
Ø 75 CM
- quality: synthetic
- anti-burst
- antistatic
- diameter approx. 75 cm
- suitable for a user with a body length of approx. 185 up to 195 cm and a body weight up to 100 kg
- made from dermatologically-friendly material

Per item in a showbox
12 items per colour in an export carton

STABILITY TRAINERS

42OG



○ WATER BAG MULTI-TRAINER INFLATABLE TUBE 14 L / 14 KG

- quality: clear synthetic tube with 4 robust SBR hand grips and printed measures for 5, 10 and 14 L / kg
- POM pump valve adaptor with bayonet lock (to fit standard double-action pump)
- dimensions 83 x 15 cm
- pump required - not included

*Per item in a showbox
12 items in an export carton*

42OH

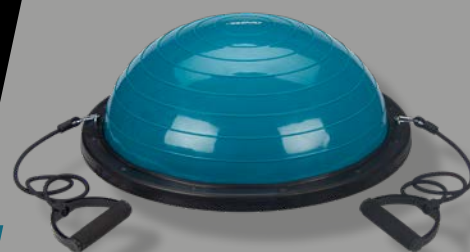


○ WATER BAG MULTI-TRAINER INFLATABLE TUBE 20 L / 20 KG

- quality: clear synthetic tube with 4 robust SBR hand grips and printed measures for 5, 10, 15 and 20 L / kg
- POM pump valve adaptor with bayonet lock (to fit standard double-action pump)
- dimensions 83 x 20 cm
- pump required - not included

*Per item in a showbox
12 items in an export carton*

42OL



○ BALANCE TRAINER + 2 RESISTANCE BANDS Ø 58 CM

- quality: synthetic
- use both sides for a greater variety of exercises
- base plate: ABS with integrated metal (rust-free) loops on each side
- inflatable balance ball with concentric rings texture
- resistance bands: elastic with textile sleeve, foam-covered handles and carabiner attachments
- includes double-action pump, two plugs and 2 resistance cords

Per item in a showbox

42OI

● WATER BAG MULTI-TRAINER INFLATABLE BALL 15 L / 15 KG

- quality: clear synthetic ball with 2 robust SBR hand grips and printed measures for 5, 10 and 15 L / kg
- POM pump valve adaptor with bayonet lock (to fit standard double-action pump)
- diameter 35 cm
- pump required - not included

*Per item in a showbox
12 items in an export carton*



42DJ

● SLAM BALL TEXTURED
6 KG

- quality: synthetic ball with textured surface for more grip
- sand filling
- does not bounce
- diameter approx. 23 cm

Per item in a showbox



42DI



○ SLAM BALL TEXTURED
4 KG

- quality: synthetic ball with textured surface for more grip
- sand filling
- does not bounce
- diameter approx. 23 cm

Per item in a showbox

42DK



○ SLAM BALL TEXTURED
8 KG

- quality: synthetic ball with textured surface for more grip
- sand filling
- does not bounce
- diameter approx. 23 cm

Per item in a showbox

42DL



○ SLAM BALL TEXTURED
10 KG

- quality: synthetic ball with textured surface for more grip
- sand filling
- does not bounce
- diameter approx. 26 cm

Per item in a showbox

RESISTANCE

42SB



○ FITNESS EXPANDER BAND ● HELIX

- quality: TPR
- fitness expander made of flexible material
- 6 loops of approx. 12 cm
- 5 thumb openings
- dimensions approx. 100 x 10 cm
- weight approx. 300 grams

Per item in a showbox

12 items per colour in an export carton

NEW

42SG



○ RESISTANCE TUBES TRAINING SET

- quality: TPR/latex
- suitable for a wide variety of exercises
- double layered latex Resistance Bands, length approx. 120 cm
- 2 TPR handgrips with profile
- 2 comfortable ankle straps with Velcro closure
- includes door anchor and carrying bag
- 5 removable straps, adjustable in resistance 5 – 15 kg:
 - level 1: 5 kg pulling force
 - level 2: 7 kg pulling force
 - level 3: 10 kg pulling force
 - level 4: 12 kg pulling force
 - level 5: 15 kg pulling force

Per set in a showbox

12 sets in an export carton

42SC

● FITNESS CHEST EXPANDER ADJUSTABLE

- quality: TPE
- 3 TPE resistance tubes
- approx. 8 kg resistance per tube
- TPR handgrips with profile with PP webbing and plastic handle
- adjust the number of the tubes to vary the intensity of your workout
- length of the tubes approx. 60 cm
- diameter handle approx. 35 mm
- weight approx. 335 grams

Per item in a showbox

12 items in an export carton





42SH **NEW**

● FITNESS RESISTANCE BAND SET
○ BOOTY TRAINER

- quality: cotton
- non-slip texture on the inside
- width: 8 cm
- set of 3 different resistance bands:
light (pink): 27 kg pulling force, length 32 cm
medium (blue): 41 kg pulling force, length 37 cm
heavy (grey): 54 kg pulling force, length 42 cm
- including handy carrying pouch with drawstring

*Per set in a showbox
12 sets in an export carton*

42SA



○ FITNESS RESISTANCE BAND SET
● 5 LEVELS

- quality: latex
- dimensions approx. 60 (circumference) x 5 (width) cm
- set of 5 different elastic bands:
level 1: 4.5 KG pulling force
level 2: 6.8 KG pulling force
level 3: 9.0 KG pulling force
level 4: 13.6 KG pulling force
level 5: 22.7 KG pulling force

*Per set in a showbox
12 sets in an export carton*

42SD



● FITNESS POWER BAND LATEX
LIGHT

- quality: latex
- 2 colours laminated
- powerbands increase flexibility, balance, strength and endurance
- dimensions 208 (circumference) x 1.3 (width) cm
- thickness 0.45 cm, pulling force 5-10 KG

*Per item in a showbox
12 items in an export carton*

42SE



○ FITNESS POWER BAND LATEX
MEDIUM

- quality: latex
- 2 colours laminated
- powerbands increase flexibility, balance, strength and endurance
- dimensions 208 (circumference) x 2.2 cm
- thickness 0.45 cm, pulling force 7.5 - 20 KG

*Per item in a showbox
12 items in an export carton*

42SF



● FITNESS POWER BAND LATEX
HEAVY

- quality: latex
- 2 colours laminated
- powerbands increase flexibility, balance, strength and endurance
- dimensions 208 (circumference) x 2.9 cm
- thickness 0.45 cm, pulling force 15 - 35 KG

*Per item in a showbox
12 items in an export carton*

TRAINERS

42HI



○ DOORWAY TRAINING BAR

- quality: telescopic bar is made of steel with brushed powder coating
- with heavy duty rubber side pads and steel fixation caps
- foam handgrips
- fits most interior doors
- suitable for a user with a body weight up to 100 KG

*Per item in a showbox
6 items in an export carton*

42HN



○ SUSPENSION TRAINER SET

- quality: nylon
- extremely versatile multifunctional equipment
- wide range of exercises possible
- compact and portable
- strong and durable straps and fixtures with non-slip handgrips
- suitable for a user with a body weight up to 150 kg
- including handy mesh carrying pouch with drawstring

*Per set in a showbox
6 sets in an export carton*

42HH

● MULTI-FITNESS DOORWAY TRAINER

- quality: frame is made of steel with brushed powder coating
- foam handgrips
- synthetic connector
- suitable for a user with a body weight up to 100 KG

*Per item in a showbox
6 items in an export carton*



42HT **NEW**

● **PUSH-UP GRIPS**
HEAVY DUTY

- quality: heavy duty steel tubes
- curved for perfect support of the wrists
- foam grip around the handle
- non-slip base plates
- height 13/15 cm
- length 24 cm
- diameter tube 25 mm
- base 16.1 x 6 x 5.5 cm

*Per pair in a showbox
6 pairs in an export carton*



SMALL EQUIPMENT

42HB



○ **PUSH-UP GRIPS**

- quality: plastic/foam
- strong plastic tubes
- foam handgrip around the tubes
- height 10/12.5 cm
- length 21 cm
- diameter tube 30.5 mm

*Per pair in a showbox
6 pairs in an export carton*

42HL



○ **PUSH-UP BOARD
FOLDABLE**

- quality: ABS
- suitable for training of the whole upper body with just one device
- portable and foldable - easy to store
- base plate with 8 holes on both sides to set to 12 different exercises
- dimensions during use: 64 x 20 x 2 cm
- dimensions when folded: 32 x 20 x 4 cm
- handgrip: height 8 cm, width (inner) 12.5 cm

*Per item in a showbox
6 items in an export carton*



42HP

NEW

AB PAD

- quality: durable PU artificial leather cover
- pre-shaped foam inner pad
- ergonomic shaped pad provides stability and naturally curved back support
- non-slip bottom
- lightweight and portable
- dimensions 36 x 30 x 7.6 cm

*Per item in shrink foil
10 items in an export carton*



42HA

POWER AB ROLLER

- quality: plastic/rubber/steel
- plastic wheel
- rubber tyre
- steel pipe on the inside with synthetic non-slip handles
- diameter wheel 17 cm
- weight approx. 440 grams

*Per item in a showbox
12 items in an export carton*

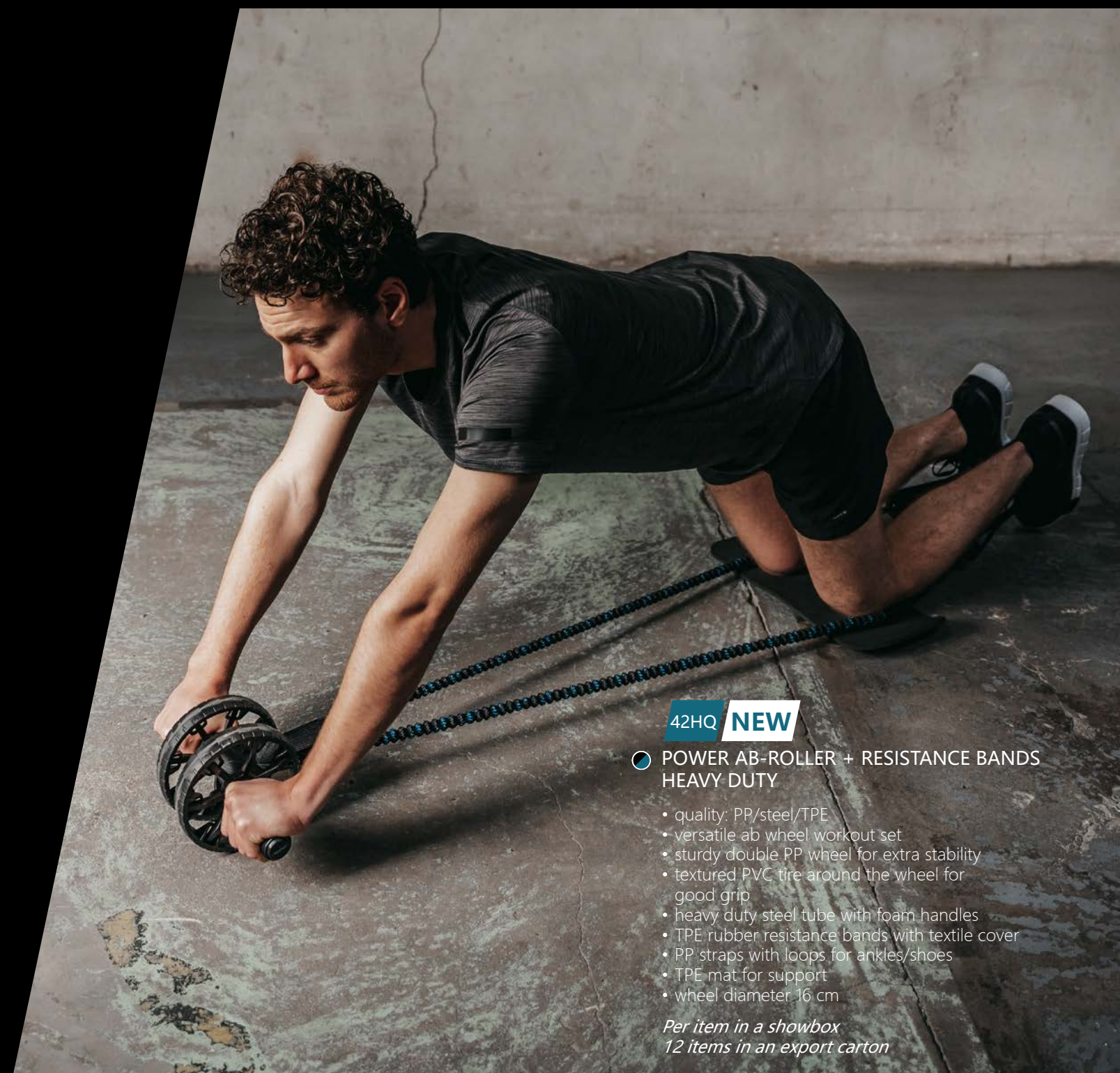


42AF

HAND GRIP STRENGTHENER ADJUSTABLE 5-20 KG

- quality: synthetic/steel
- synthetic rubber handgrips
- adjustable stainless steel spring
- turning button for adjusting resistance
- weight approx. 125 grams

*Per item in a display packaging
12 items in an export carton*



42HQ NEW

POWER AB-ROLLER + RESISTANCE BANDS HEAVY DUTY

- quality: PP/steel/TPE
- versatile ab wheel workout set
- sturdy double PP wheel for extra stability
- textured PVC tire around the wheel for good grip
- heavy duty steel tube with foam handles
- TPE rubber resistance bands with textile cover
- PP straps with loops for ankles/shoes
- TPE mat for support
- wheel diameter 16 cm

*Per item in a showbox
12 items in an export carton*



42HF

● FITNESS HULA HOOP FOAM 1.2 KG

- quality: synthetic
- 6-part, reinforced plastic hoop with foam cover, diameter 100 cm
- massaging nubs
- diameter tube approx. 3.5 cm
- thickness foam approx. 3.8 mm
- weight approx. 1.2 KG

*Per item in a showbox
6 items in an export carton*

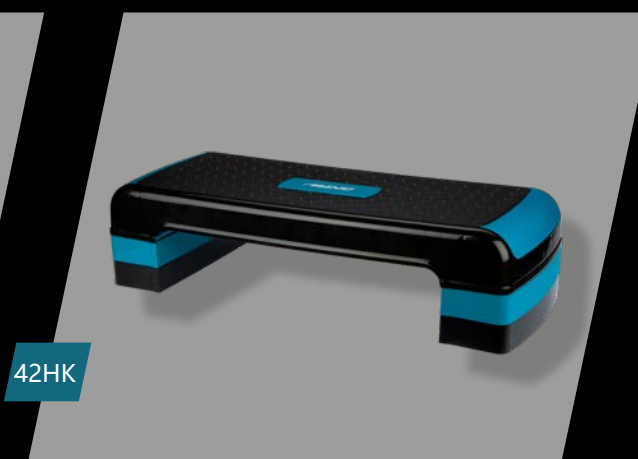


42HJ

● FITNESS STEP SMALL

- quality: PP/PE
- dimensions 66 x 25 x 15 cm
- adjustable to 2 heights by means of divisible leg parts: 10 > 15 cm
- non-slip surface on top
- non-slip base pads
- reinforced model, 2.7 kg
- suitable for a user with a body weight up to 100 kg

Per item in a showbox

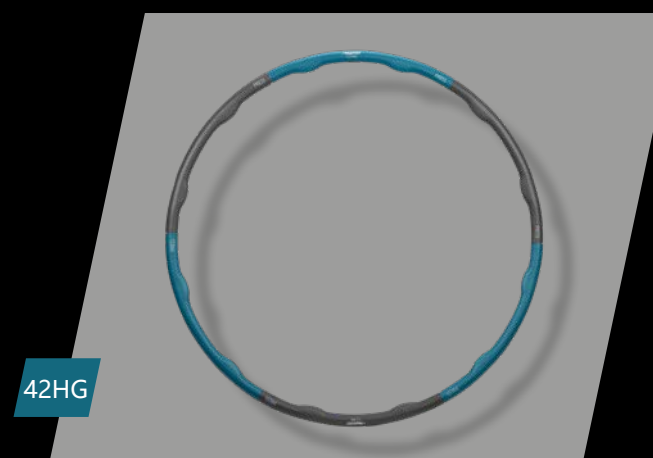


42HK

● FITNESS STEP LARGE

- quality: PP/PE
- dimensions 79 x 29 x 20 cm
- adjustable to 3 heights by means of divisible leg parts: 10 > 15 > 20 cm
- non-slip surface on top
- non-slip base pads
- reinforced model, 3.6 kg
- suitable for a user with a body weight up to 100 kg

Per item in a showbox



42HG

● FITNESS HULA HOOP FOAM 1.5 KG

- quality: synthetic
- 6-part, reinforced plastic hoop with foam cover, diameter 100 cm
- massaging nubs
- diameter tube approx. 3.5 cm
- thickness foam approx. 3.8 mm
- weight approx. 1.5 KG

*Per item in a showbox
6 items in an export carton*

42HC



○ JUMP ROPE BASIC
● SLIM GRIP

- quality: synthetic
- length cord approx. 280 cm
- thickness cord approx. 0.5 cm
- length handgrip approx. 12.5 cm
- weight approx. 75 grams

*Per item in a display packaging
24 items per colour in an export carton*

42HE



○ JUMP ROPE
● FOAM GRIP

- quality: synthetic
- PP handgrips with foam
- ABEC bearings
- length cord 314 cm - easy to adjust
- weight approx. 160 grams

*Per item in a display packaging
24 items in an export carton*

42HR



NEW

○ JUMP ROPE SET
● HEAVY DUTY

- quality: PP/PU/steel
- 1 switchable steel cord with plastic rope protection tube
- weight adjustable handles
- 1 extra, lightweight cord with plastic rope protection tube
- weighted PP handles with PU non-slip tape and ball bearings
- length cord approx. 300 cm, can easily be adjusted by means of a screw
- thickness cord: black approx. 3.3 mm; blue approx. 2.6 mm
- length handles: approx. 14 cm
- weight complete set: 530 grams
- including: handy carrying pouch, spare fixation screws and rope caps

*Per set in a showbox
12 sets in an export carton*

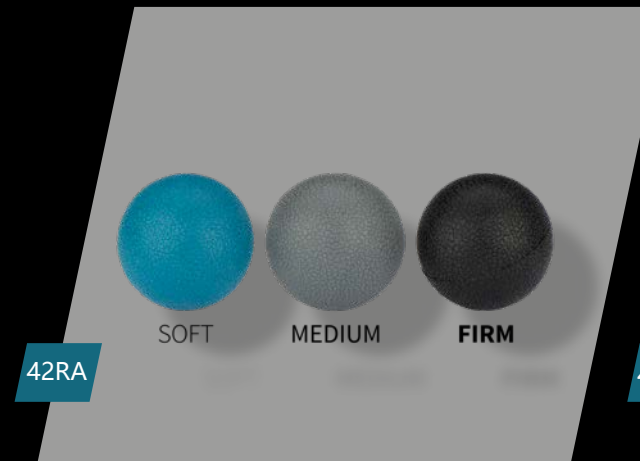
42HO

○ JUMP ROPE STEEL
● SPEED GRIP

- quality: steel cord with plastic cover
- cone-shaped plastic handgrips with EVA
- length cord approx. 290 cm, can easily be adjusted by means of a screw
- thickness cord approx. 2.8 mm
- length handgrip approx. 16 cm
- weight approx. 90 grams

*Per item in a display packaging
24 items per colour in an export carton*





42RA

○ MASSAGE BALLS SET OF 3

● Ø 5.0 CM

- quality: TPR
- 3 different hardnesses: soft, medium and firm
- diameter 5 cm

Per set in a showbox

12 sets in an export carton

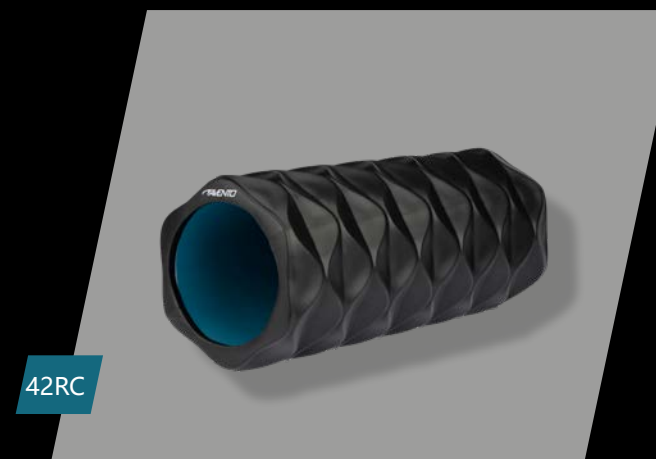


41WE

● MASSAGE FOAM ROLLER BLOCK

- quality: EVA/synthetic
- EVA foam with synthetic core
- grid foam roller
- dimensions approx. 32.6 x 14.5 x 13.3 cm
- weight approx. 850 grams

Per item in shrink foil
8 in an export carton



42RC

● MASSAGE FOAM ROLLER WAVE

- quality: EVA/synthetic
- EVA foam with synthetic core
- wavy grid foam roller
- dimensions approx. 33 x 14 x 13.5 cm
- weight approx. 850 grams

Per item in shrink foil
8 in an export carton

YOGA

AVENTO

42YA

YOGA BLOCK SET OF 2

- quality: EVA foam
- lightweight
- rounded corners and edges for a better grip
- dimensions 23 x 15 x 7.6 cm
- weight approx. 240 grams per yoga block

*Per set in shrink foil
12 sets per colour in an export carton*



42YD **NEW**

○ YOGA STRAP

- quality: cotton
- strong woven cotton yoga band
- 2 metal D-rings
- length approx. 250 cm
- weight approx. 170 grams

*Per item in a showbox
20 items in an export carton*



42YB



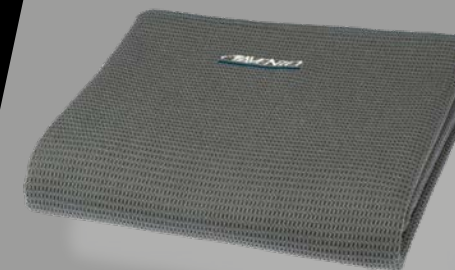
NEW

○ MEDITATION CUSHION

- quality: linen/buckwheat hull
- linen cover
- adjustable height
- with carrying strap
- buckwheat hull filling
- double zipper
- dimensions approx. 30 x 14 cm
- weight approx. 2.1 kg

*Per item in a showbox
4 items in an export carton*

42YC



NEW

○ YOGA TOWEL

- quality: 80% polyester/20% nylon
- soft woven material
- silicone non-slip studs on the bottom
- absorbent and quick-drying
- size approx. 183 x 66 cm
- lightweight approx. 550 gr/ m²

*Per item on a headercard
10 items in an export carton*

42MF



NEW

○ FITNESS/YOGA MAT

- quality: soft, eco-friendly TPE
- 2-tone fitness mat
- double-sided non-slip texture
- easy to clean
- thickness approx. 0.6 cm
- dimensions approx. 183 x 61 cm
- lightweight: 700 gram
- including handy extra wide carrying strap

*Per item in shrink foil
6 items per colour in an export carton*

ACCESSORIES

AVENTO

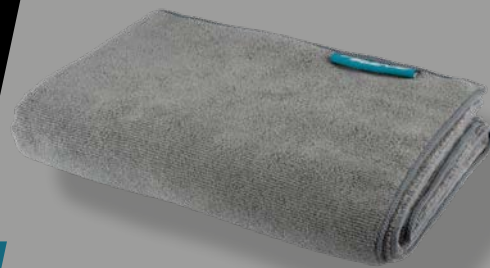
42AB NEW

● FITNESS GLOVES MESH

- quality: polyester with brushed inside
- stretchy finger inserts for comfortable fit
- fully covered palm with silicone dots for excellent grip
- breathable mesh on the top for optimal comfort
- velcro fastener
- size range: S/M, L/XL

*Per pair on a header card
12 pairs per size in an inner packaging
60 pairs per size in an export carton*





42AC

○ SPORTS TOWEL MICRO FIBRE
120 X 80 CM

- quality: polyester
- compact
- microfibre
- high absorption capacity
- dimensions 120 x 80 cm
- total weight 280 grams

*Per item in a net
24 items in an inner packaging
48 items in an export carton*



42AA

○ FITNESS GLOVES NEOPRENE

- quality: neoprene
- stretchy finger inserts for comfortable fit
- fully covered with silicone dots for excellent grip on palm and fingers
- ventilation openings on top
- velcro fastener
- size range: S/M, L/XL

*Per pair on a headercard
12 pairs per size in an inner packaging
60 pairs per size in an export carton*



21WQ

○ SHAKE BOTTLE
● 1.0 LITRE

- quality: PP
- PP bottle, cap and shaker ball
- screw cap and drinking nozzle with lid
- height bottle 25 cm

*Per item in a polybag
24 items per colour in an export carton*



21WE

21WF

○ SHAKE BOTTLE
0.4 LITRE/ 0.6 LITRE

- quality: LDPE
- rubber cap
- screw cap and drinking nozzle with lid
- content indicator on the side of the bottle
- stainless steel ball to shake the sports drink
- sieve prevents drinking clumps
- height bottle 16/22 cm

*Per item in a polybag
24 items in an export carton*

42AG **NEW**

● WRIST WRAPS STABILIZING
PER PAIR

- quality: heavy woven polyester
- supportive latex band
- breathable and moisture absorbent
- woven silicone anti-slip layer
- handy thumb loop
- soft Velcro closure
- dimensions wrap approx. 37 x 8 cm

*Per pair in a showbox
25 pairs in an export carton*





BOXING

GLOVES - BAGS - STANDARDS

Boxing is a multi-faceted sport that helps you to channel your energy, to feel your inner power and to blow off steam at the same time. Accept the challenge to better yourself physically and mentally and surpass even your own expectations!

GLOVES

41BH



BOXING GLOVES PU 6 OZ

- quality: PU leather
- matt PU leather shell
- ventilating 100% polyester mesh inner palm
- velcro power strap
- with thumb protection
- weight 6 oz / 0.17 KG

*Per pair in a net
10 pairs in an export carton*

41BM



BOXING GLOVES PU 8 OZ

- quality: PU leather
- matt PU leather shell
- ventilating 100% polyester mesh inner palm
- velcro power strap
- with thumb protection
- weight 8 oz / 0.23 KG

*Per pair in a net
10 pairs in an export carton*

41BN



BOXING GLOVES PU 10 OZ

- quality: PU leather
- matt PU leather shell
- ventilating 100% polyester mesh inner palm
- velcro power strap
- with thumb protection
- weight 10 oz / 0.28 KG

*Per pair in a net
10 pairs in an export carton*

41BO



BOXING GLOVES PU 12 OZ

- quality: PU leather
- matt PU leather shell
- ventilating 100% polyester mesh inner palm
- velcro power strap
- with thumb protection
- weight 12 oz / 0.34 KG

*Per pair in a net
10 pairs in an export carton*

41BP

BOXING GLOVES PU 14 OZ

- quality: PU leather
- matt PU leather shell
- ventilating 100% polyester mesh inner palm
- velcro power strap
- with thumb protection
- weight 14 oz / 0.40 KG

*Per pair in a net
10 pairs in an export carton*



41BI

● BOXING HAND WRAPS

- quality: 100% cotton
- 100% cotton, reinforced fish bone webbing
- velcro fastener strap
- dimensions wrap 250 x 5 cm
- dimensions thumb loop 2 x 4 cm

*Per pair in a polybag with headercard
50 pairs per colour in an export carton*



41BS

● BOXING SPARRING HAND PADS

- quality: PU leather
- matt PU leather shell
- velcro power strap with elastic adjustment insert
- dimensions per pad 24 x 19/10 x 5.5 cm
- weight per pad approx. 200 gram

*Per pair in a net
10 pairs in an export carton*



41BT

● BOXING SPARRING BLOCK PAD

- quality: PU leather
- matt PU leather shell
- velcro power straps with elastic adjustment insert
- dimensions 34.5 x 20.5 x 8 cm
- weight approx. 520 gram

*Per item in a net
10 items in an export carton*



BAGS

41BJ



● PUNCHING BAG 10 KG/60 CM

- quality: canvas shell with PU panel
- compressed rags and PE foam filling
- extra strong zipper
- 2 heavy PP webbing suspension bands, dimensions 78 x 3.5 cm
- 2 steel triangle rings, dimensions 4.75 x 4.75 cm, diameter 4.5 mm
- steel carabiner hook, dimensions 5 x 3.5 cm, diameter 6.85 mm
- diameter approx. 28 cm

Per item in an export carton

41BK



● PUNCHING BAG 15 KG/80 CM

- quality: canvas shell with PU panel
- compressed rags and PE foam filling
- extra strong zipper
- 2 heavy PP webbing suspension bands, dimensions 78 x 3.5 cm
- 2 steel triangle rings, dimensions 4.75 x 4.75 cm, diameter 4.5 mm
- steel carabiner hook, dimensions 5 x 3.5 cm, diameter 6.85 mm
- diameter approx. 32 cm

Per item in an export carton

41BR

● BOXING WALL MOUNTING FRAME

- quality: steel
- steel bracket with powdercoating
- distance from wall 50 cm
- mounting materials NOT included
- max. load 150 KG

Per per item in a showbox

41BL

○ PUNCHING BAG 20 KG/100 CM

- quality: canvas shell with PU panel
- compressed rags and PE foam filling
- extra strong zipper
- 2 heavy PP webbing suspension bands, dimensions 78 x 3.5 cm
- 2 steel triangle rings, dimensions 4.75 x 4.75 cm, diameter 4.5 mm
- steel carabiner hook, dimensions 5 x 3.5 cm, diameter 6.85 mm
- diameter approx. 36 cm

Per item in an export carton



41BB



● PUNCHBAG INFLATABLE STAND REFLEX

- quality: polyester
- removable 300D polyester cover with zipper
- inflatable synthetic inner punchbag
- chrome-plated steel pole
- high-impact PE base 30L to be filled with water and sand
- total height approx. 161 cm
- dimensions punchbag Ø 30 x 110 cm

Per item in a showbox

41BD



● PUNCHBAG STAND REFLEX

- quality: PU foam
- PU foam punchbag
- chrome-plated steel bar
- high-impact PE base approx. (30L) to be filled with water and sand
- in height adjustable from 110 cm up to 153 cm

Per item in a showbox



AVENTO IS A BRAND OF SCHREUDERS SPORT INTERNATIONAL, A DUTCH, FAMILY-RUN HOUSE OF BRANDS.

We design, develop and market winning, contemporary sports, outdoor and leisure goods.

We have proudly served our customers for over a century, promptly responding to market demand from in-house stock. Our extensive expertise in product development combined with a socially and environmentally responsible business ethic, helps us to realise continued, sustainable growth for our own organisation and for our customers.

Your goal ► Our game

JSC Skorpiono Takas

Nemuno str. 79 - 5 Panevezys, Lithuania
info@skorpionas.lt
+370 699 21211
www.skorpionas.lt